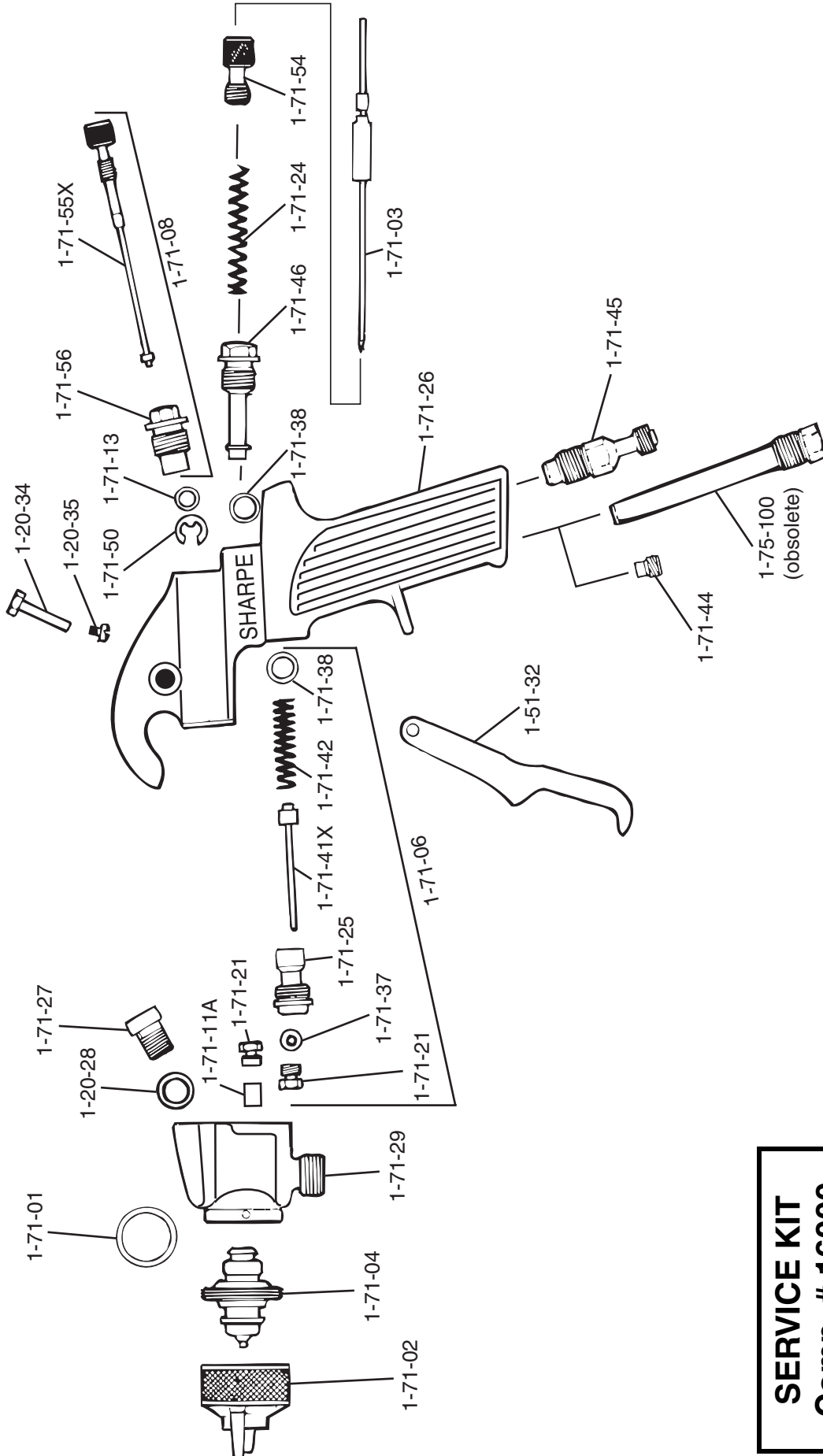


MODEL 71 & 75PI SPRAY GUNS



SERVICE KIT
Comp. # 16000

SEE OTHER SIDE FOR PART DESCRIPTION AND MODELS AVAILABLE

PART NO.	COMP. NO.	DESCRIPTION	71 Qty	75PI Qty
1-20-28	U10326	Head Attachment Gasket	1	1
1-20-34	U10332	Trigger Shaft	1	1
1-20-35	U10333	Trigger Screw	1	1
1-51-32	U14122	Trigger	1	1
1-71-01	U16100	Tip Gasket	1	1
1-71-02		Air Cap (See Chart Below)	1	1
1-71-03		Fluid Needle (See Chart Below)	1	1
1-71-04		Fluid Tip (See Chart Below)	1	1
1-71-06	U16132	Air Valve Assy.	1	1
1-71-08	U16134	Spray Width Adjuster Assy.	1	1
1-71-11A	U16137	Fluid Needle Packing	1	1
1-71-13	U16139	Spray Width Control Packing	1	1
1-71-21	U16147	Fluid Needle Packing Nut	2	2
1-71-24	U16150	Fluid Needle Spring	1	1
1-71-25	U34948	Air Valve Cage	1	1
1-71-26	U16152	Gun Handle	1	1

PART NO.	COMP. NO.	DESCRIPTION	71 Qty	75PI Qty
1-71-27	U16153	Head Attachment Screw	1	1
1-71-29	U16155	Gun Head	1	1
1-71-36	U16147	Air Valve Packing Nut	superseded by 1-71-21	
1-71-37	U16162	Air Valve Packing	1	1
1-71-38	U16163	Air Valve Cage Gasket	2	2
1-71-41X	U25066	Air Valve	1	1
1-71-42	U16167	Air Valve Spring	1	1
1-71-43	U16163	Material Control Bushing Gasket	superseded by 1-71-38	
1-71-44	U16169	Plug	1	0
1-71-45	U16170	Air Inlet Nipple	1	1
1-71-46	U16171	Material Control Bushing	1	1
1-71-50	U16175	Spray Width Control "E" Clip	1	1
1-71-54	U16179	Material Control Knob	1	1
1-71-55X	U16180	Spray Width Control Knob & Valve	1	1
1-71-56	U16181	Spray Width Control Body	1	1
1-75-100	U16169	Pressure Indicator	0	use 1-71-44

AIR CAP AND FLUID TIP COMBINATIONS FOR MODEL 71 & 75PI SPRAY GUNS

MODELS AVAILABLE	AIR CAP	FLUID TIP	FLUID NEEDLE	AIR CONSUMPTION	REMARKS
2-70	1-71-02-#2 Comp. #16101	(.070) 1-71-04-70 Comp. #16126	(.070) 1-775-03-70N Comp. #16120	5.0 CFM @ 50 PSI	REQUIRES ONLY 1 H.P. COMPRESSOR
6-70	1-71-02-#6 Comp. #16105	(.070) 1-71-04-70 Comp. #16126	(.070) 1-775-03-70N Comp. #16120	7.0 CFM @ 50 PSI	REQUIRES ONLY 1.5 H.P. COMPRESSOR
6S-70	1-71-02-#6S Comp. #16106	(.070) 1-71-04-70 Comp. #16126	(.070) 1-775-03-70N Comp. #16128	7.0 CFM @ 50 PSI	REQUIRES ONLY 1.5 H.P. COMPRESSOR
10-55	1-71-02-#10 Comp. # 16111	(.055) 1-71-04-55 Comp. #16128	(.045) 1-775-03-45N Comp. #16119	11.0 CFM @ 50 PSI	EXTRA FINE ACRYLIC URETHANE FINISHING
8-70	1-71-02-#8 Comp. #16108	(.070) 1-71-04-70 Comp. #16126	(.045) 1-775-03-45N Comp. #16120	11.0 CFM @ 50 PSI	HIGH SPEED PRODUCTION
9P-45	1-71-02-#9P Comp. #16109	(.045) 1-71-04-45 Comp. #16125	(.045) 1-775-03-45N Comp. #16119	15.7 CFM @ 50 PSI	PRESSURE FEED HIGH SPEED PRODUCTION
P.G.	1-71-02-#PG Comp. #16115	(.090) 1-71-04-90 Comp. #16127	(.070) 1-775-03-90N Comp. #16122	11.0 CFM @ 50 PSI	PRIMER SURFACER AND GLITTER
10-70	1-71-02-#10 Comp. #16111	(.070) 1-71-04-70 Comp. #16126	(.070) 1-775-03-70N Comp. #16120	11.0 CFM @ 50 PSI	EXTRA FINE HIGH SPEED PRODUCTION
CC-70	1-71-02-#CC Comp. #16113	(.070) 1-71-04-70 Comp. #16126	(.070) 1-775-03-70N Comp. #16120	11.0 CFM @ 50 PSI	CLEAR COAT APPLICATION

SHARPE MANUFACTURING COMPANY • P.O. BOX 1441, Minneapolis, MN 55440-1441

1 (800) SHARPE1 • www.sharpe1.com

311288B, Revised 7/2008